

L1028KDRW

f = 1.05mm F2.8 Megapixel lens

for 1/2.5 type Format Board Cameras, Fisheye, No Iris, IP66(L1)

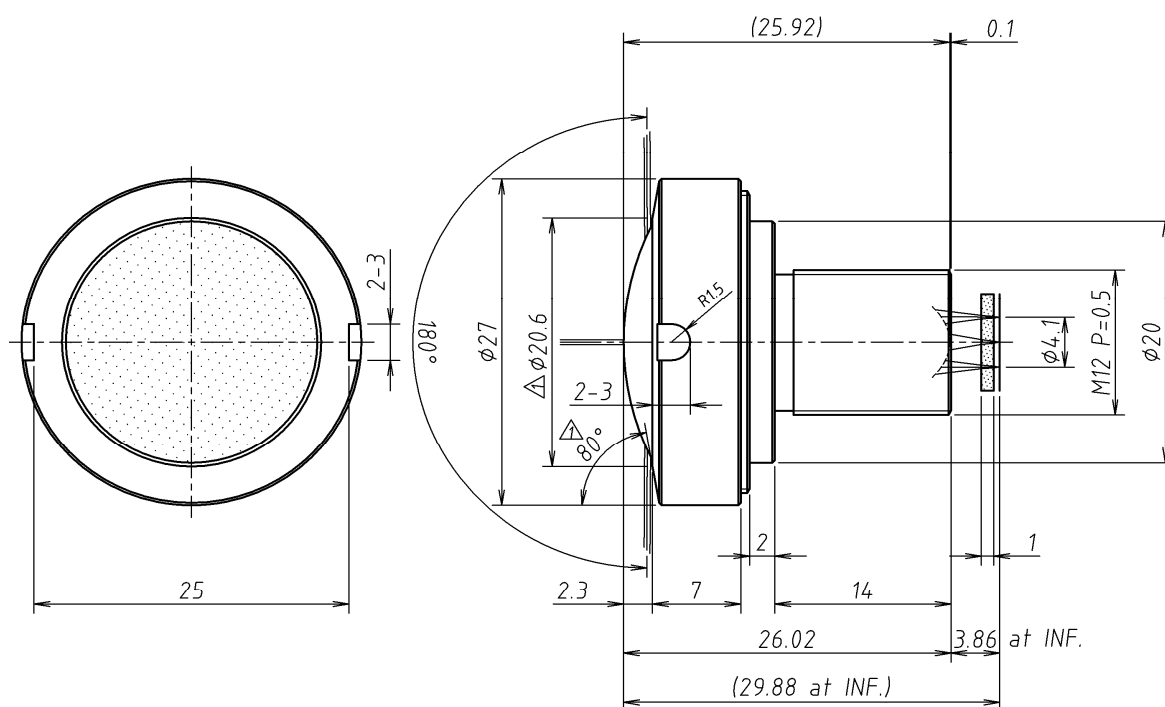
IR corrective

Model No.		L1028KDRW		Effective	Front	ϕ 20mm	
Focal Length		1.05mm		Lens Aperture	Rear	ϕ 5.4mm	
Max. Aperture Ratio		1:2.8		Distortion		−96.66%	
Image Size at 180°		ϕ 4.1		Back Focal Length		3.62mm	
Operation Range	Iris	−		Flange Back Length		−	
	Focus	0.05m - Inf.		Mount		M12 P=0.5mm	
Object Dimention at M.O.D.	1/2.5 type	−		Dimensions		ϕ 27mm x 26.02mm	
	1/3 type	−		Weight		17.3g	
Coating		MgF2 Single Coat (All Surfaces λ = 510nm)					
Angle of View (Peripheral light amount 50%)	D	1/2.5 type	−	1/3 type	−	1/4 type	180.0°
	H	Fisheye	−		180.0°		163.2°
	V		180.0°		163.2°		130.2°

1/2.5
inch

M12 P=0.5

Dimensions



ImmerVision Enables Compatible.

Specification is subject to change without any notice.

01/07/2014